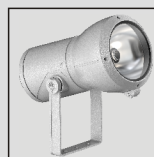




平面玻璃设计  
Flat glass

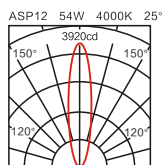
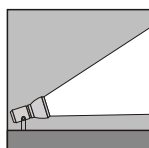
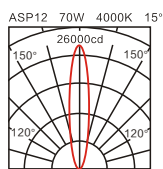
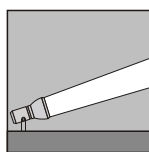
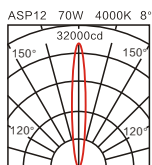
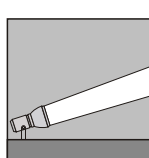


灯体一体化  
Integration of lamp body



可调节角度  
Adjustable angle

### 配光曲线 Light distribution curve



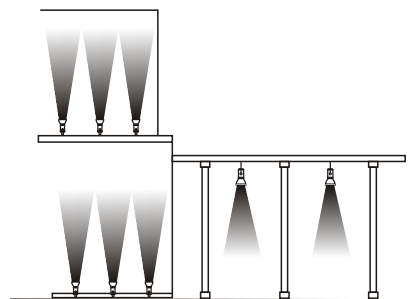
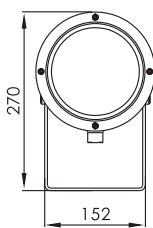
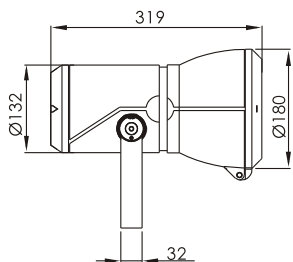
### 产品特点 Product Features

#### 投光灯/经典ASP12

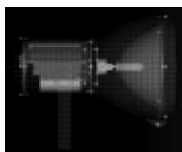
安装方式: 支架安装  
光源描述: 金卤灯光源  
电器描述: 电感镇流器  
表面工艺: 灯体表面喷涂防UV稳定聚酯粉  
灯身材质: ADC12压铸铝  
面板材质: 高强度钢化玻璃  
IP 等级: IP66  
电器防护等级: Class I

Floodlight / Classic ASP12

Mounting: Bracket  
Light source: Metal halide lamp source  
Control gear: Magnetic ballast  
Finish: Polyester powder coated, UV-stabilized  
Housing: ADC12 Die Cast Aluminum  
Lens: High quality tempered glass  
IP Rating: IP66  
Safety Class: Class I



型号 Model	电压 Voltage	功率 Power	光束角 Beam Angle	光通量 Lumen	色温 Color Temperature	防护等级 IP Code	控制方式 Control Mode
ASP12	220V	70W	8°/15°/25°	6600lm	4000K	IP66	HIT



**灯体一体化**  
简洁时尚极富建筑性,缩小体积的同时能更能融入建筑结构  
Integration of lamp body  
One-piece design with integral control gear for simple fixing at site

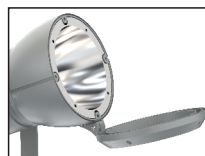


**平面玻璃**  
平面玻璃设计, 实现天然自动清洗, 保持灯具的照明度  
Flat tempered glass lens Flat glass lens can be self-cleaned to maintain the clarity by raining



独立测试透光 IES Format 光照度文件, 配合专业电脑软件 PHOTO PIA AGI 及 Dialux 计算配光角度及支臂角度固定配件, 提供专业效果。

All photometric testing in IES format; can be applied with softwares i.e. Photo PIA, AGL and Dialux for illumination calculation



**安装方便**  
顶部为稳固玻璃面盖设计,方便及安全更换光源; 一体化灯具设计,轻便且安装、维护简单

Easy Install  
Hinged cover lens for easy re-lamping and maintenance.

